



001 HEAVY DUTY

Suitable for demanding operations in tough environment. Long-lasting seals designed for repeated operations without failure

003 HIGH FLOW – HIGH PRESSURE

Stabs and Receptacles designed for high flow capacity and low pressure drop. Up to 2000L/min and rated for 10 000Psi/690Bar

BLUE LOGIC Ø80 LARGE BORE HOT STAB SYSTEM

Blue Logic's Ø80 Large Bore Hot Stab System is designed for high-flow operations.

005 EASY AND SAFE OPERATION

J-lock included to lock the Stab into the Receptacle. Swivel connection between stab and handle/J-Lock to allow for free rotation independent of hose orientation.

007 SHORT TERM OR LONG TERM

Stabs and Receptacles available in short-term (intervention) and long-term (permanent) versions.

002 FLEXIBLE CONNECTION

No requirement for specific orientation of Stab during installation. 360° flow distribution from stab combined with receptacle designed with annulus geometry ensure maximum flow. Dual-entry receptacles available for increased access during operation.

004 COMPLETE RANGE OF SYSTEM COMPONENTS

A large range of components available

- Flow stabs
- Receptacles
- Protection stabs
- Pressure stabs, standard and dual exit

006 MULTIPLE RECEPTACLE TYPES

Receptacles available in various configurations:

- With or without J-Lock
- 5K and 10K pressure ratings
- Single or dual entrance
- Long term or short term service
- Weld-neck or WECO type interface
- Parking receptacles





Blue Logic Ø80 Large Bore Hot Stab System

Technical Data

General Data	
Design standard	API 17H Type 4
Depth rating	3000m
Operating temperature	-4 to +60°C
Material, stab ¹	S165M
Material, rec. ¹	Super Duplex
Material, seals ²	HPU
Fluid compatibility ³	Mineral based control fluids, Synthetic control fluids, MEG, Seawater ++
Dimensions, Stab	300 x 120 x 537 mm
Dimensions, Receptacle	Ø240 x 240mm
Weight, air/water, Stab	15,7 / 13,6 kg
Weight, air/water, Receptacle	32,3 / 28,2 kg
Hydraulic interface, Stab ⁴	2" Weco 1502 Female
Hydraulic interface, Receptacle ⁴	2" Weld Neck, Sch. 160
Hydraulic bore, Stab	Ø45 mm
Hydraulic bore, Receptacle	Ø42,9 mm
Max. flow / pressure drop	2000 L/min / 14 Bar
Working pressure	690 Bar / 10 000 Psi



BA4826 SP Stab 10K



BA4822 SP Receptacle, 10K



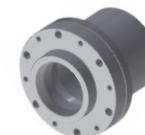
BA2363 SP Pressure Stab 10K



BA8204 SP Receptacle Dual Entry, 10K



BA5621 SP Pressure Stab 10K, Dual Exit



BA1587 SP Parking Receptacle Vented



BA4609 SP Protection Stab, Vented



BA4845 SP Park. Receptacle w. J-Lock

- 1: Other materials available upon request
- 2: Material to suit special medium available upon request
- 3: For special fluids, contact Blue Logic
- 4: Other hydraulic interfaces available upon request

